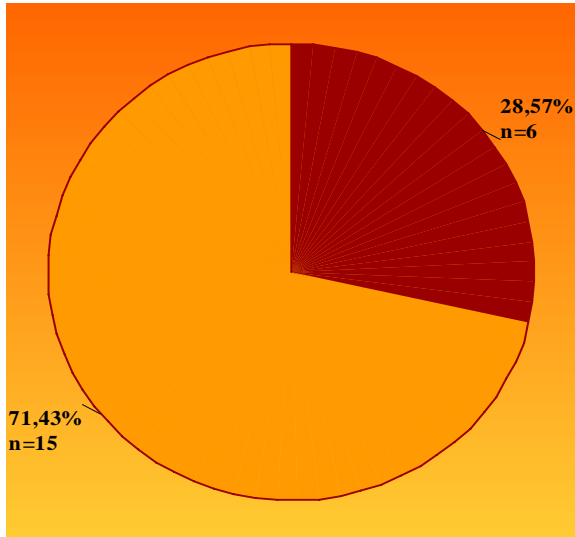


ΠΑΡΑΡΤΗΜΑ Β

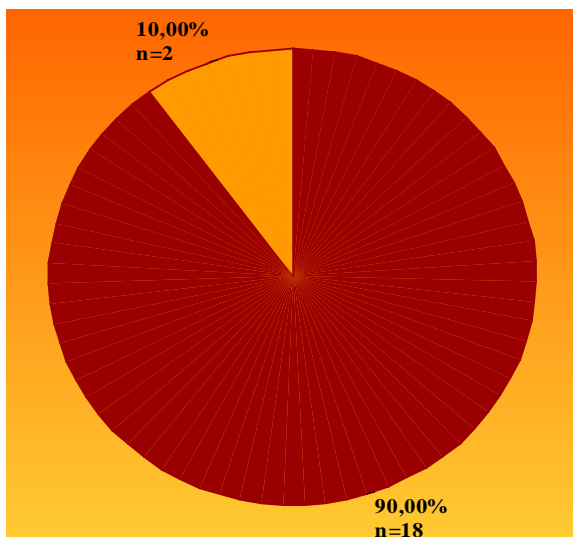
SUMMARY STATISTICS BY SEX



[1=Male, 2=Female]



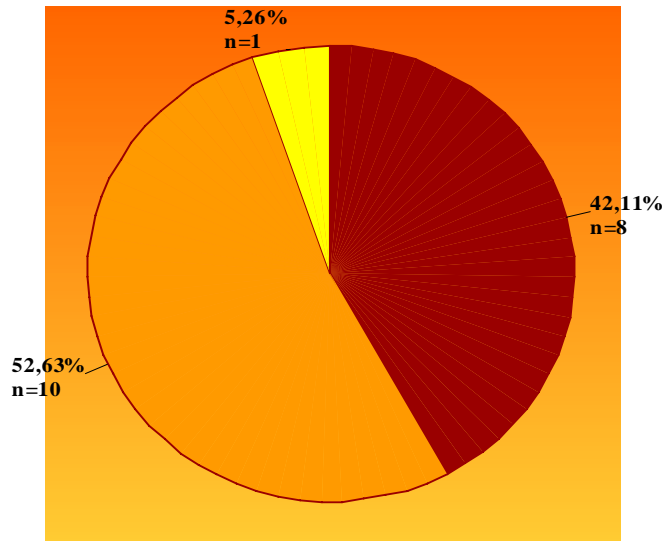
SUMMARY STATISTICS BY YEAR OF STUDY



[1=1st Year, 2=2nd Year, 3=3rd Year, 4=4th Year, 5=Other]



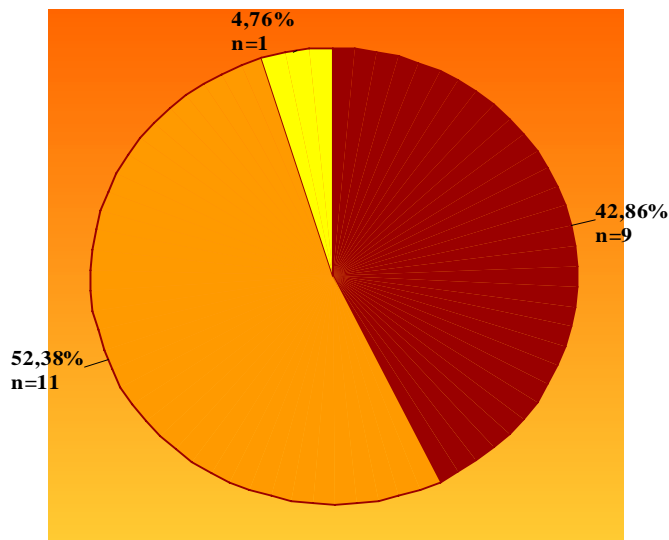
SUMMARY STATISTICS BY GPA



[1= < 5, 2= 5 - 6.49,
3= 6.5 - 8.49, 4= 8.5 -10,
5= Not Available]



SUMMARY STATISTICS BY EXPECTED GRADE

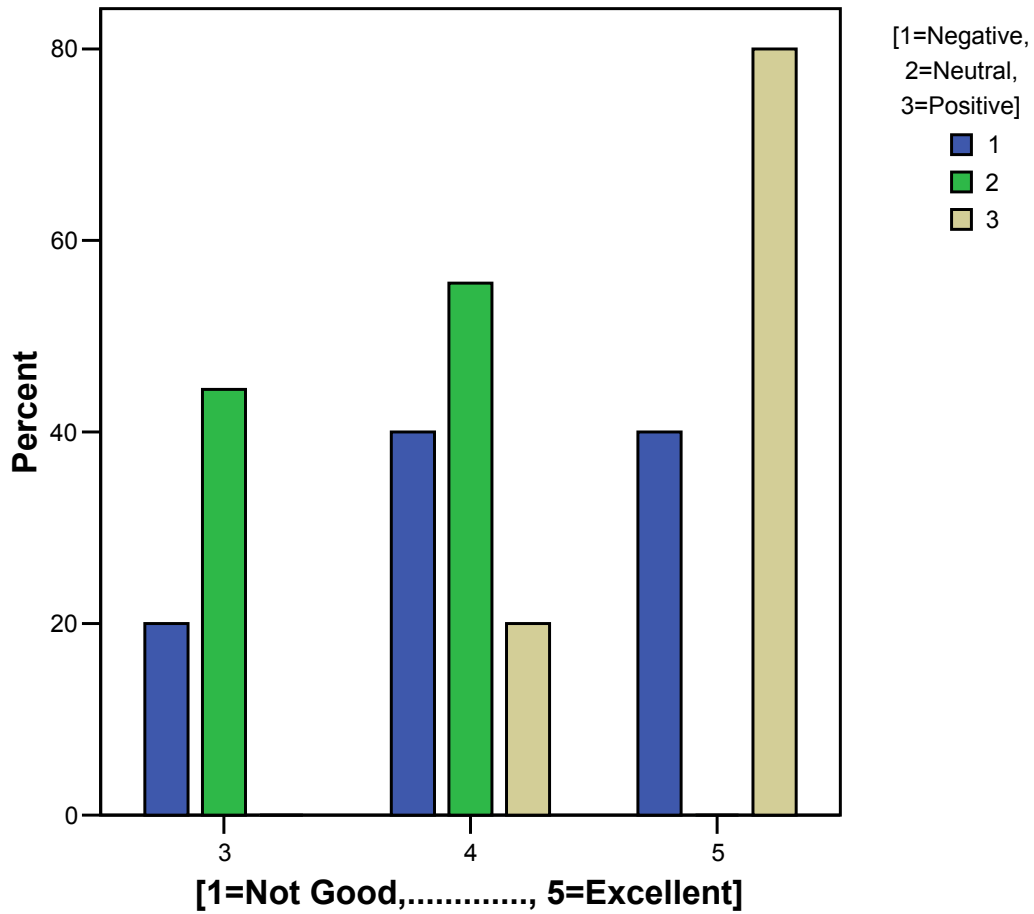


[1= < 5, 2= 5 - 6.49,
3= 6.5 - 8.49, 4= 8.5 -10,
5= Not Available]

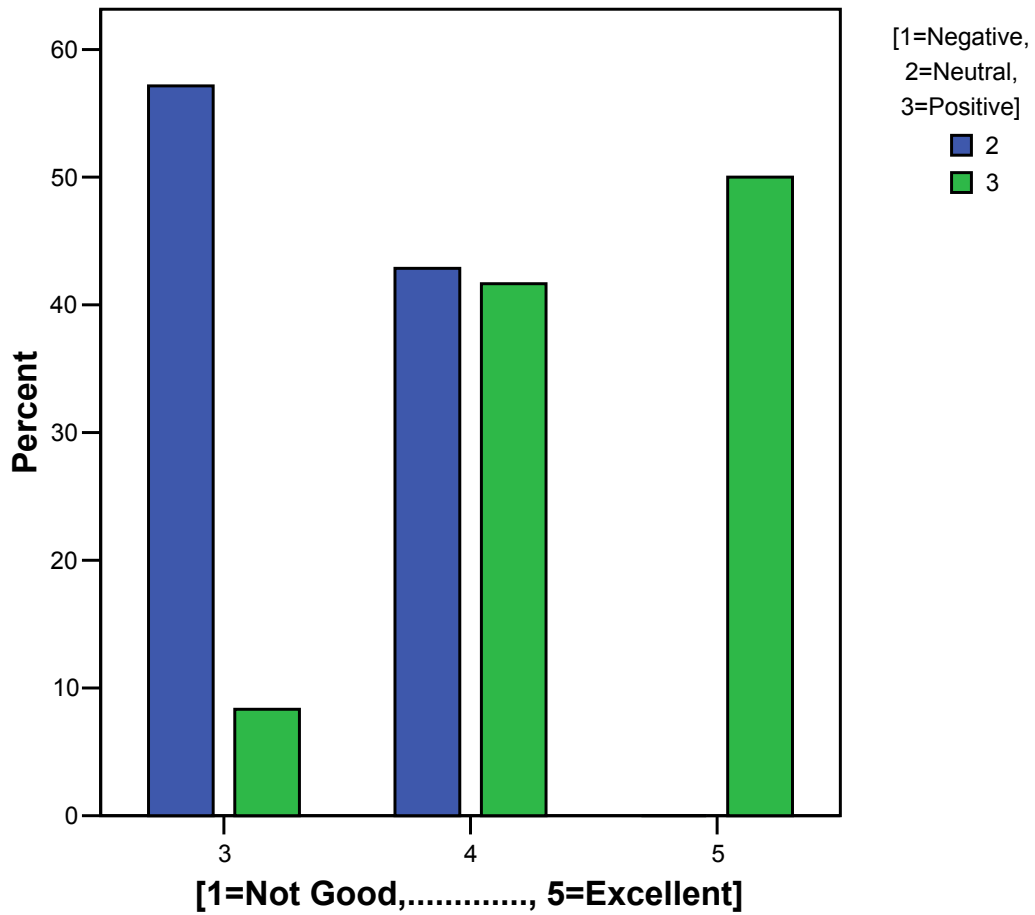


ΠΑΡΑΡΤΗΜΑ Γ1

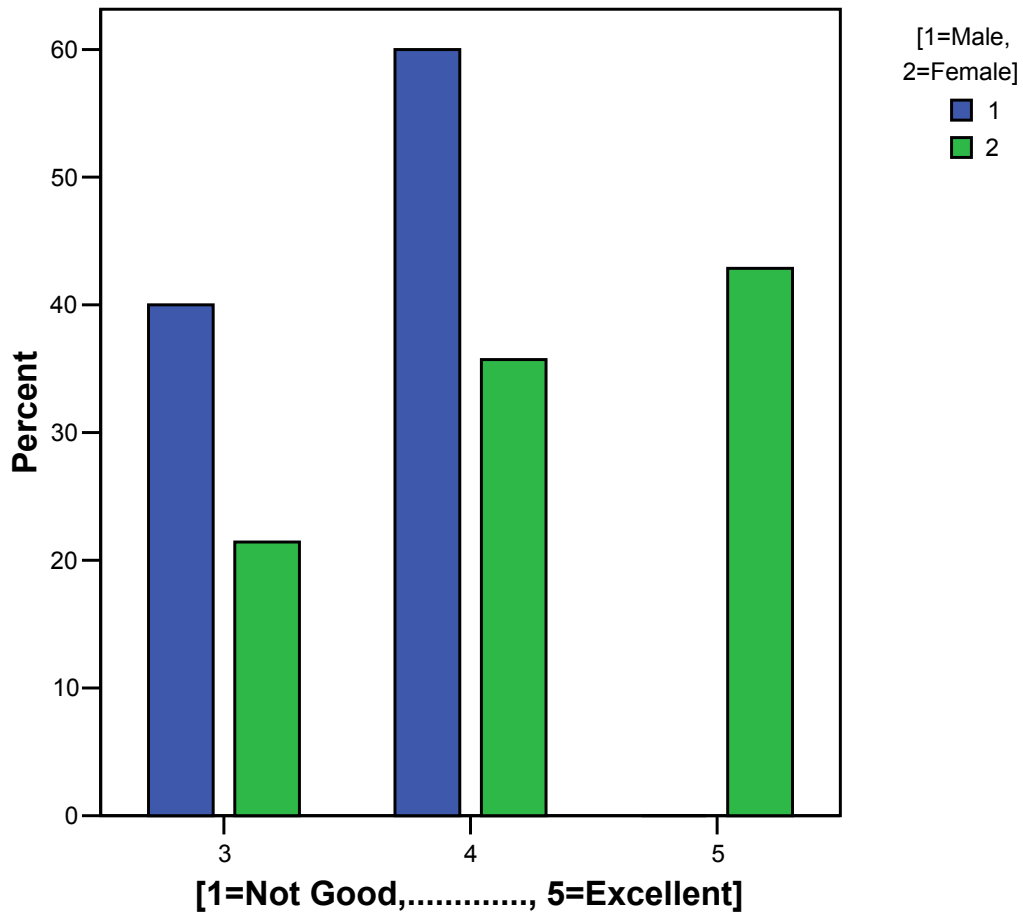
GENERAL EVALUATION OF THE INSTRUCTOR BY STUDENT'S IMPRESSION (6.1)



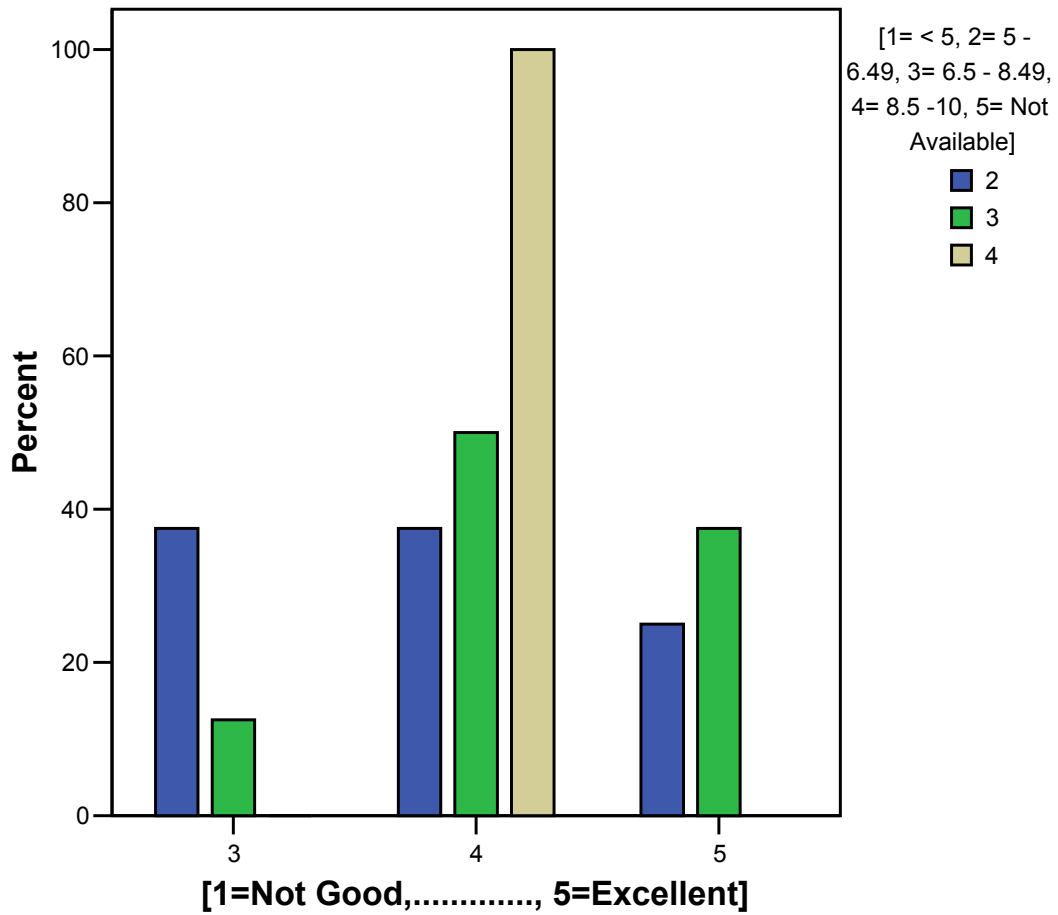
GENERAL EVALUATION OF THE INSTRUCTOR BY STUDENT'S IMPRESSION (6.2)



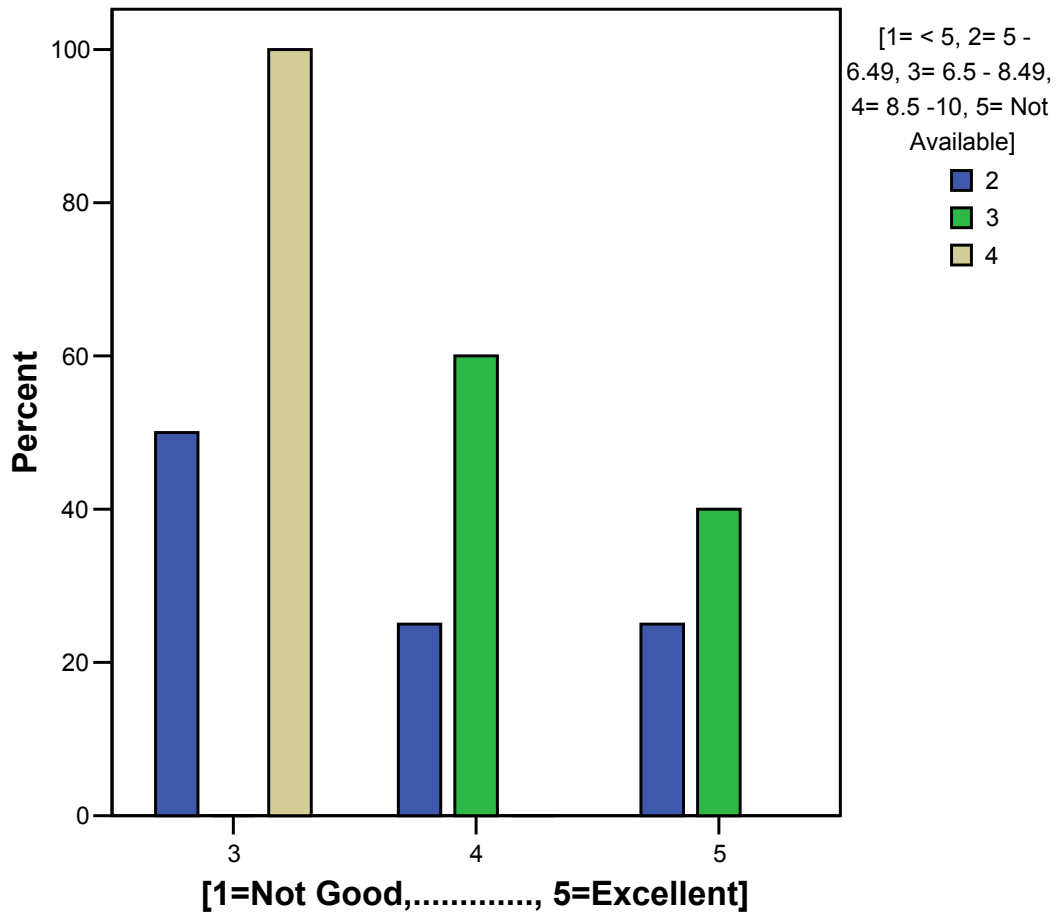
GENERAL EVALUATION OF THE INSTRUCTOR BY SEX



GENERAL EVALUATION OF INSTRUCTOR BY GPA

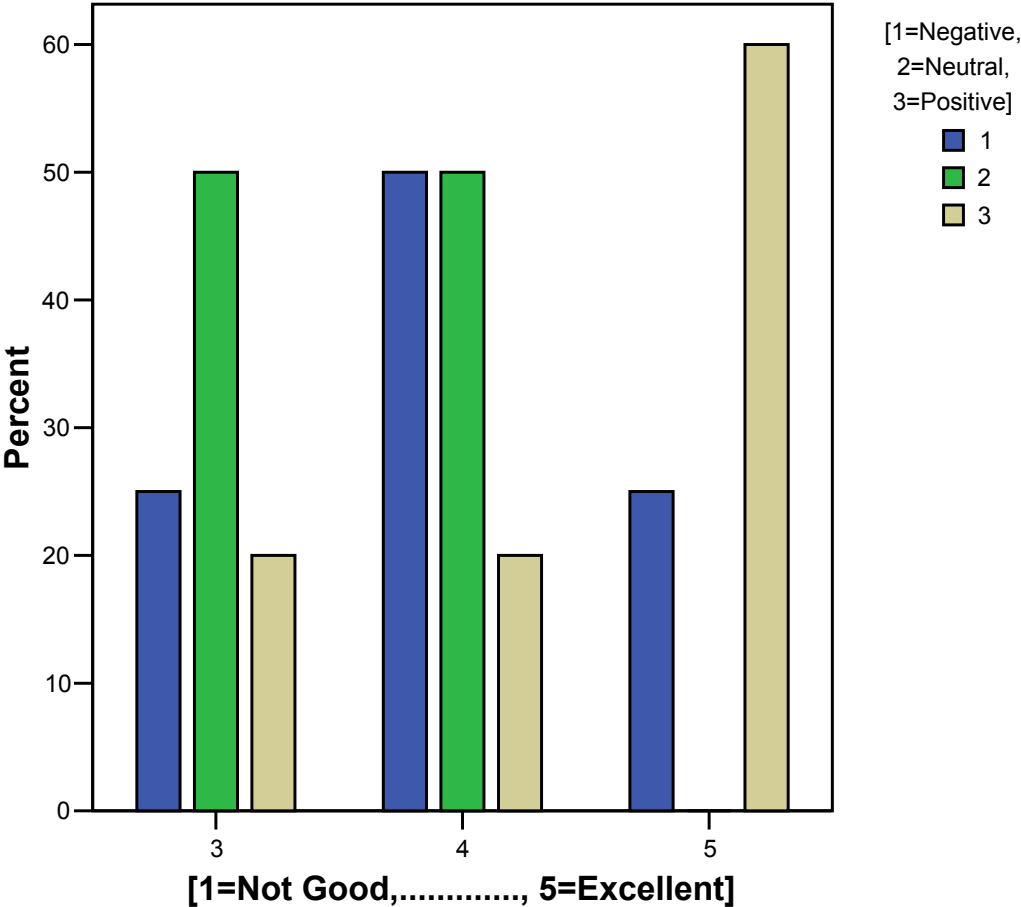


GENERAL EVALUATION OF THE INSTRUCTOR BY EXPECTED GRADE

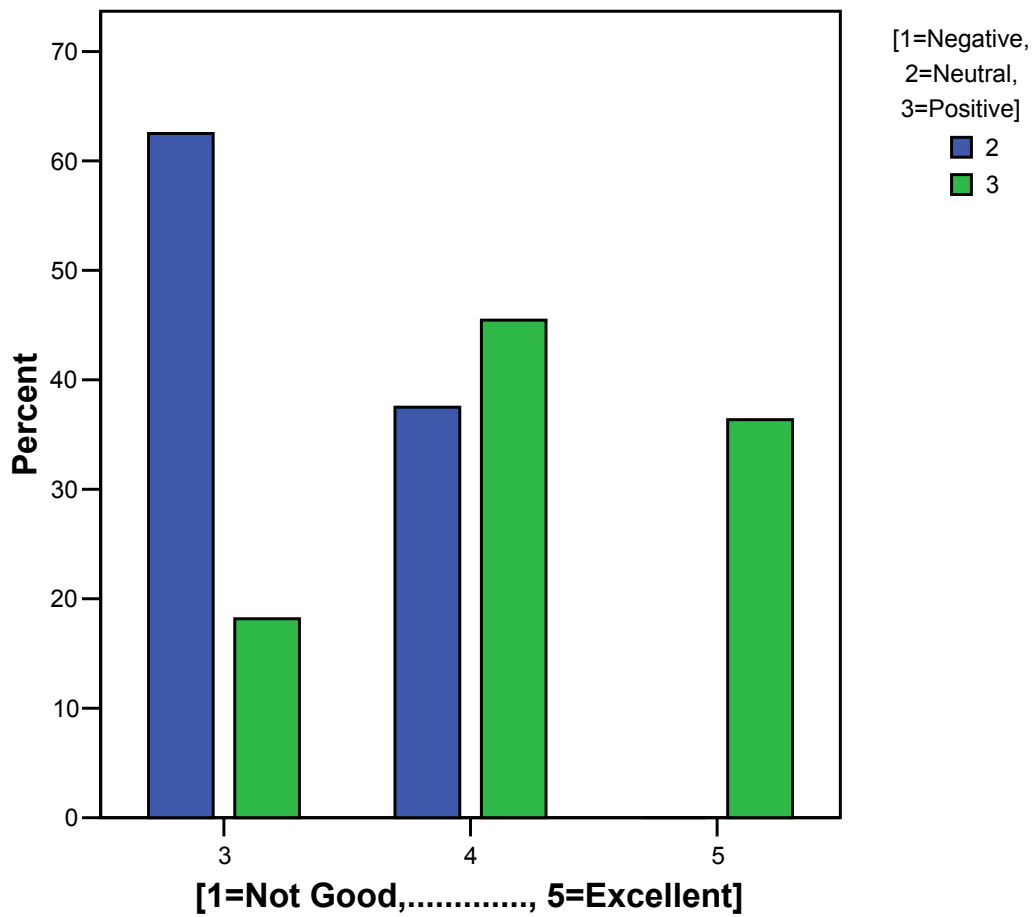


ΠΑΡΑΡΤΗΜΑ Γ2

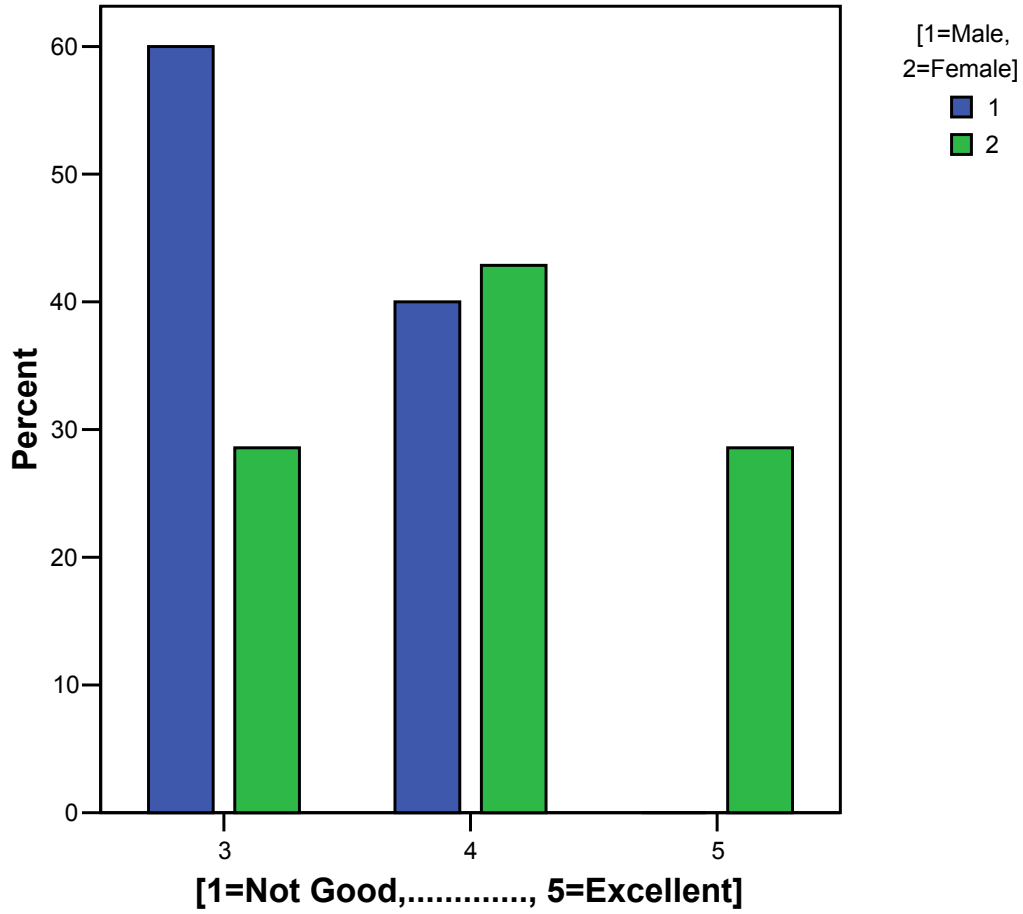
GENERAL EVALUATION OF THE COURSE BY STUDENT'S IMPRESSION (6.1)



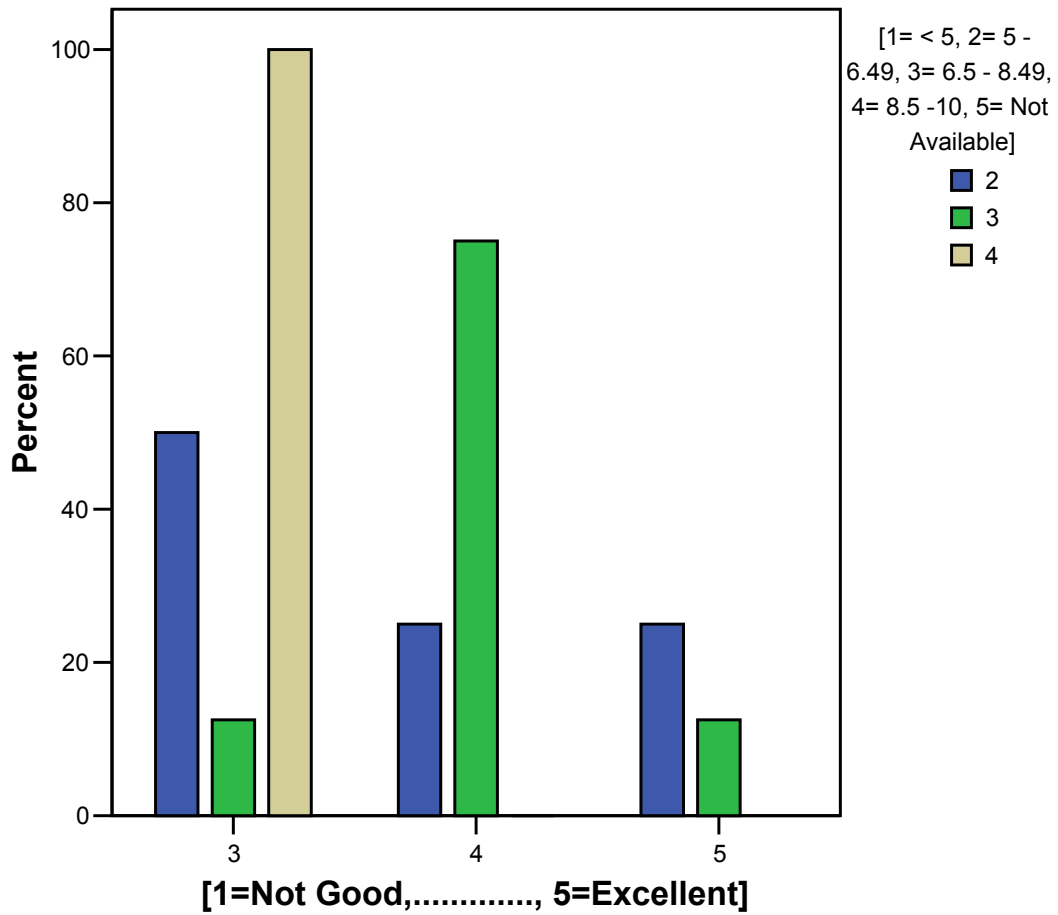
GENERAL EVALUATION OF THE COURSE BY STUDENT'S IMPRESSION (6.2)



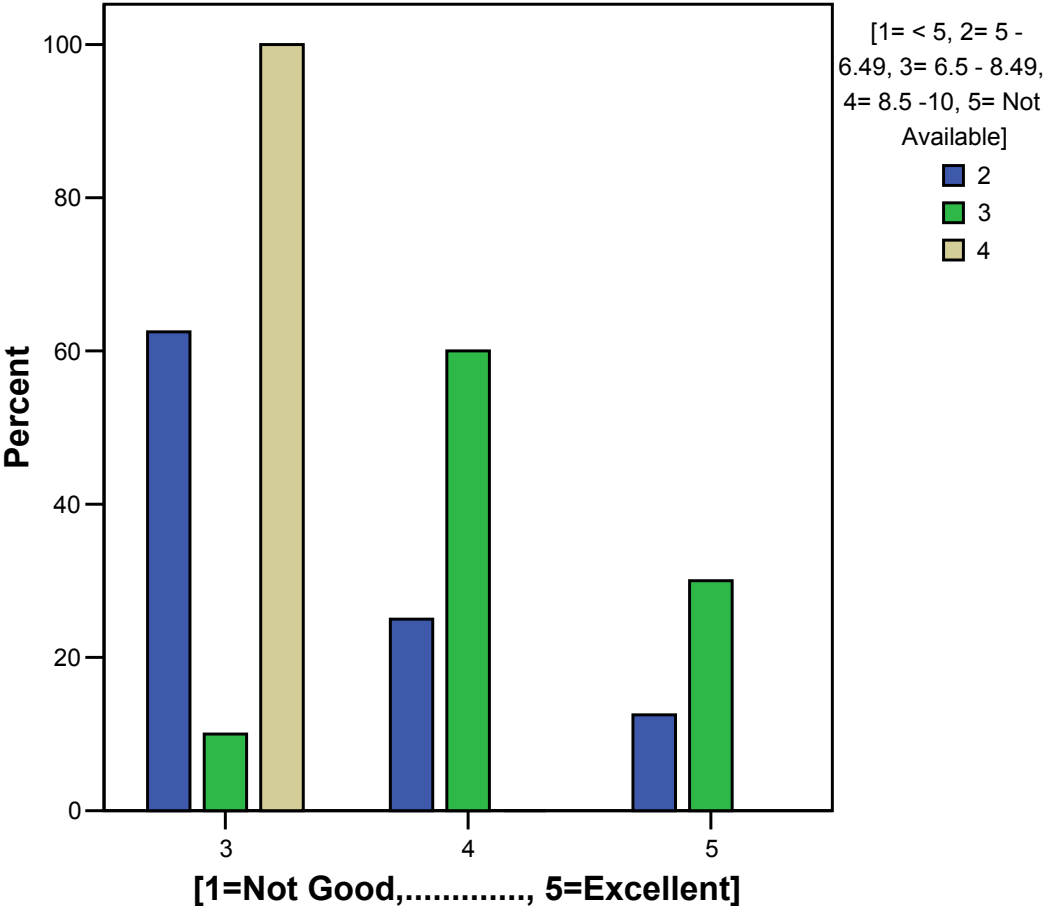
GENERAL EVALUATION OF THE COURSE BY SEX



GENERAL EVALUATION OF THE COURSE BY GPA

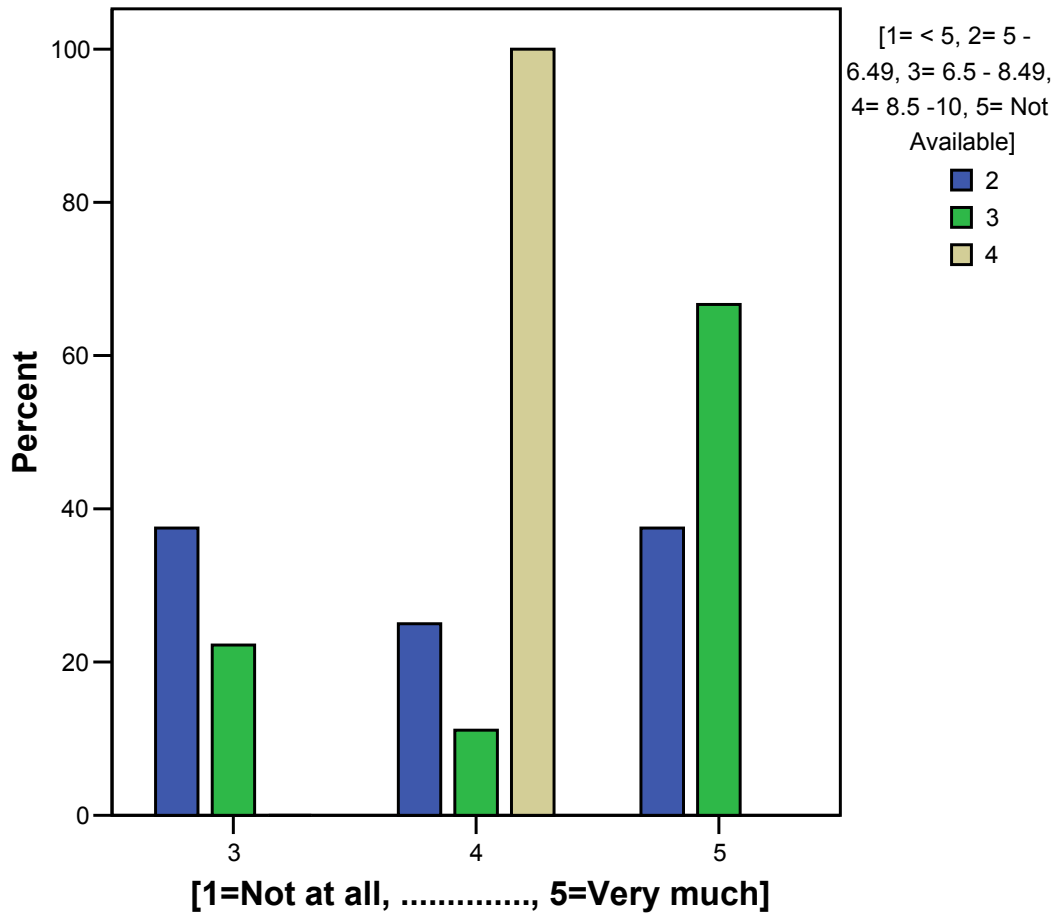


GENERAL EVALUATION OF THE COURSE BY EXPECTED GRADE

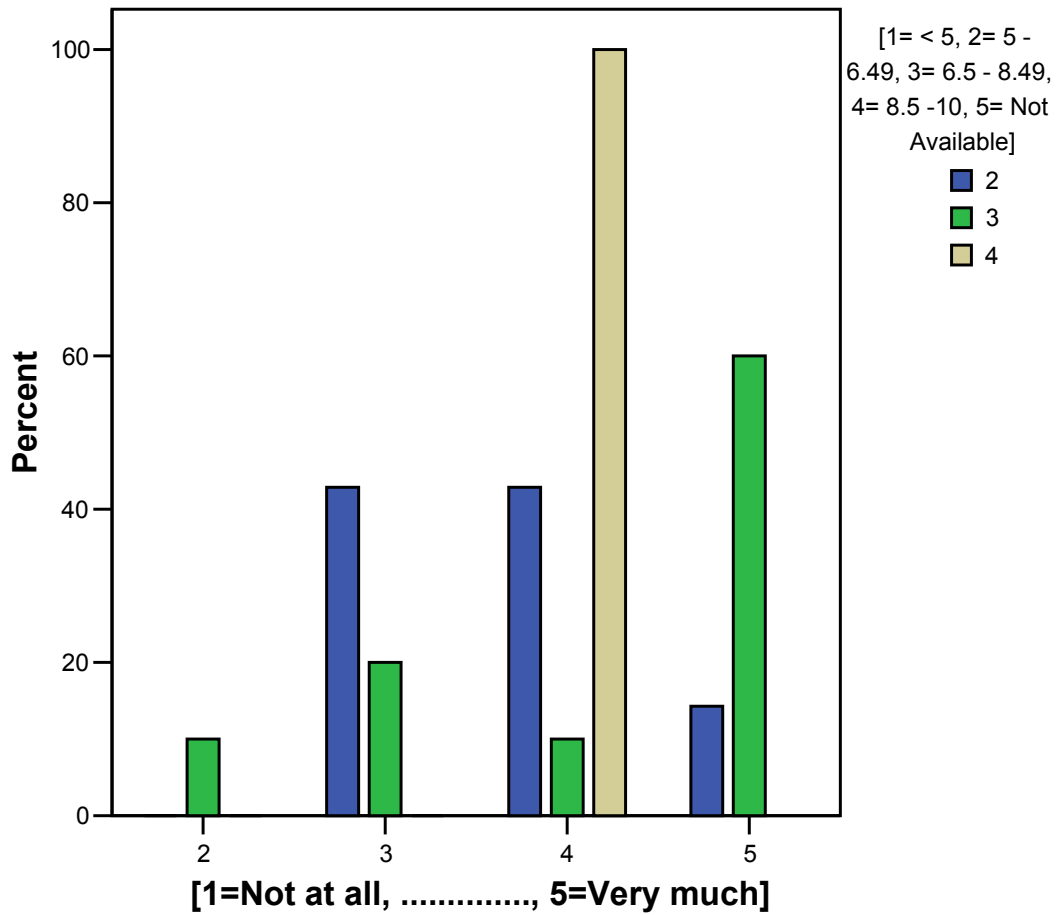


ΠΑΡΑΡΤΗΜΑ Δ

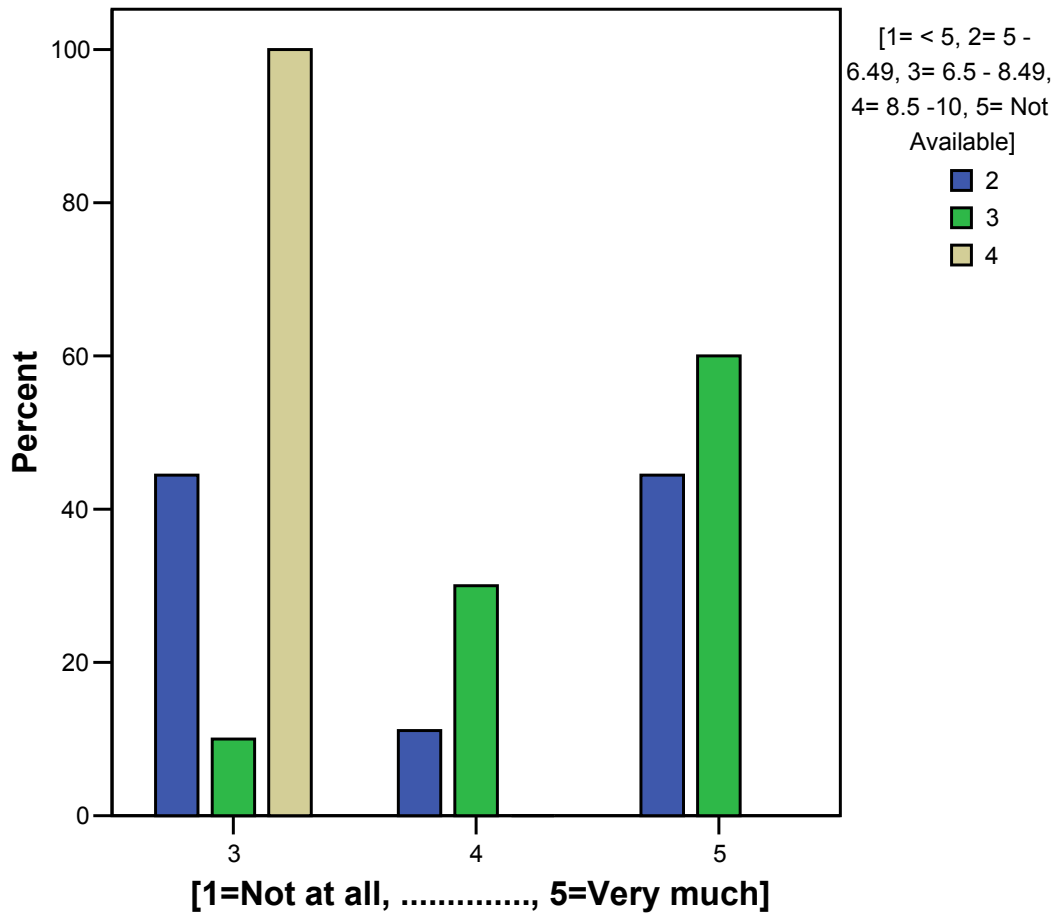
KNOWLEDGE OF THE SUBJECT (QUESTION 20.8) BY GPA



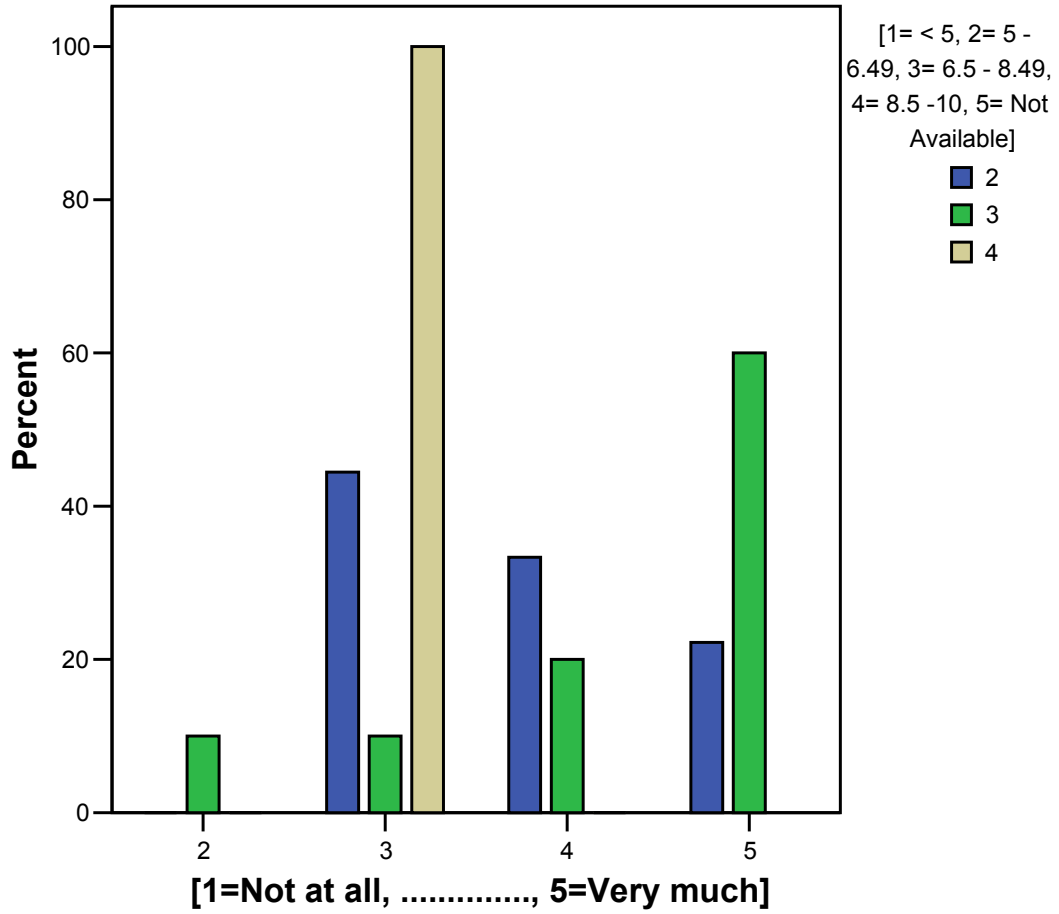
IMPARTING (SHARING) OF KNOWLEDGE (QUESTION 20.9) BY GPA



KNOWLEDGE OF THE SUBJECT (QUESTION 20.8) BY EXPECTED GRADE

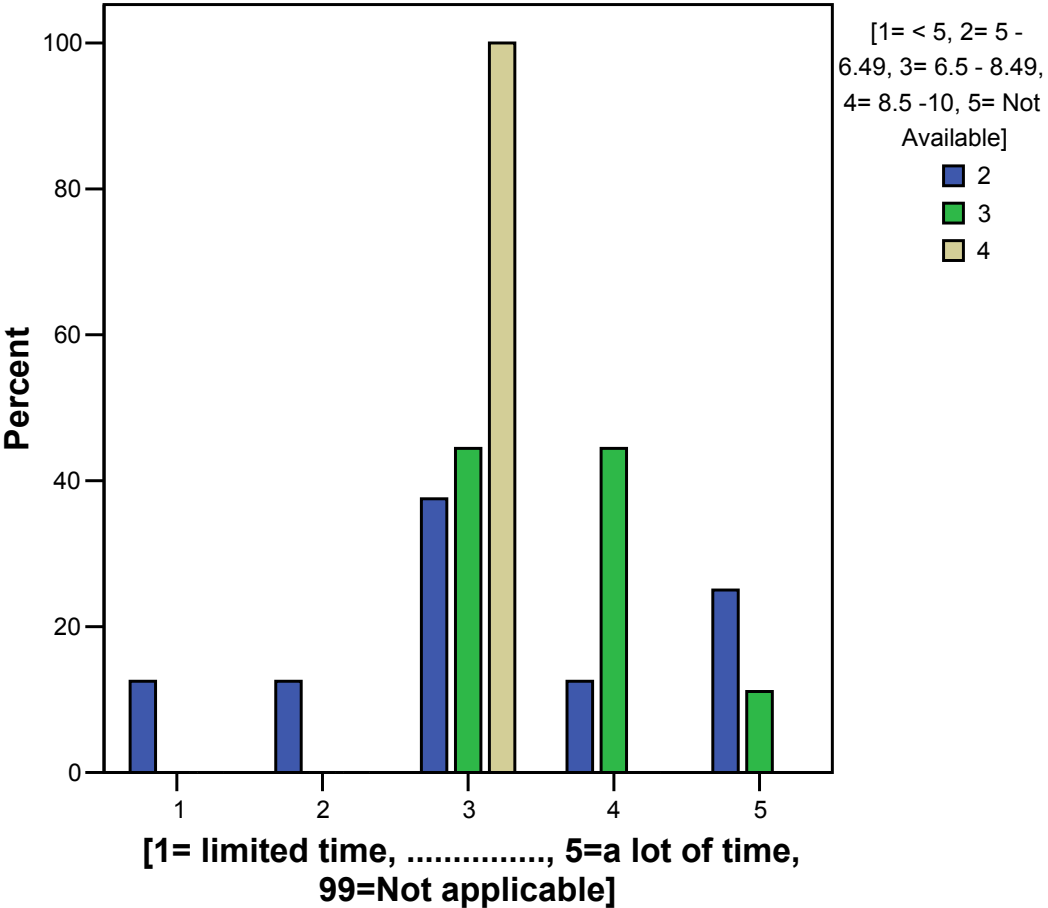


IMPARTING (SHARING) OF KNOWLEDGE (20.9) BY EXPECTED GRADE

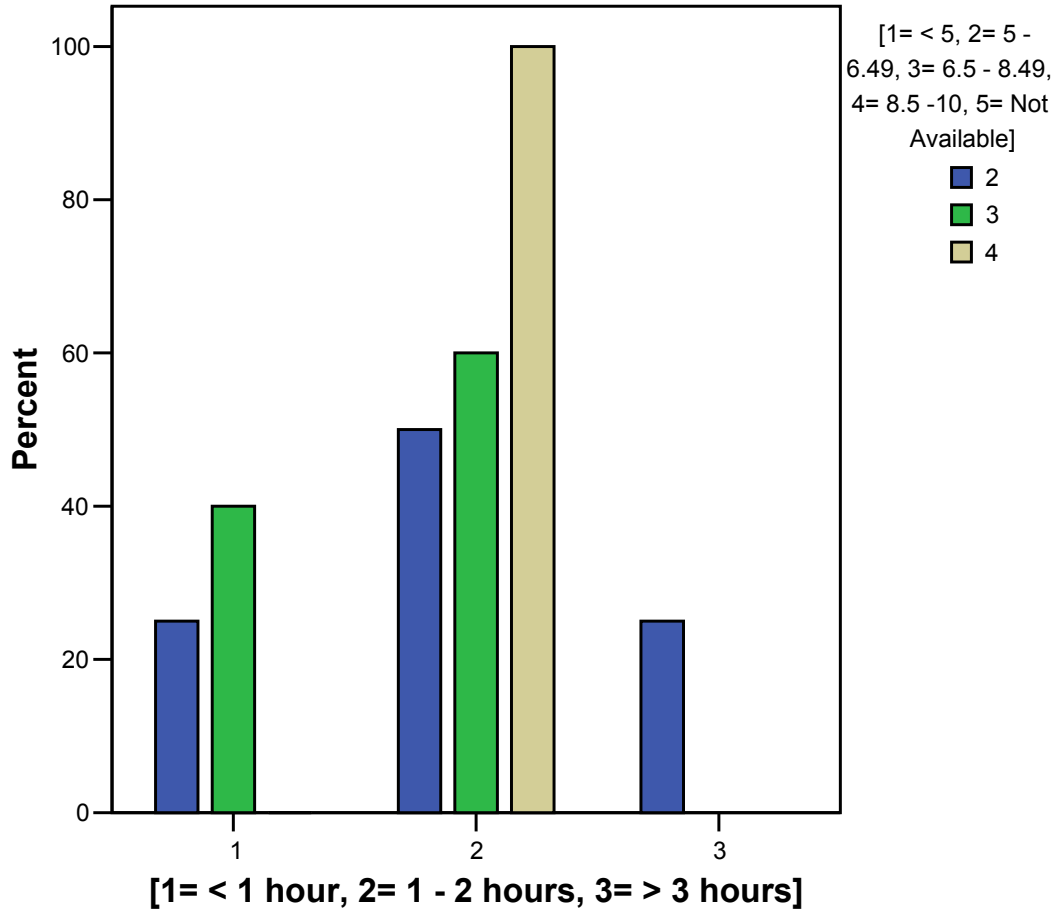


ΠΑΡΑΡΤΗΜΑ Ε

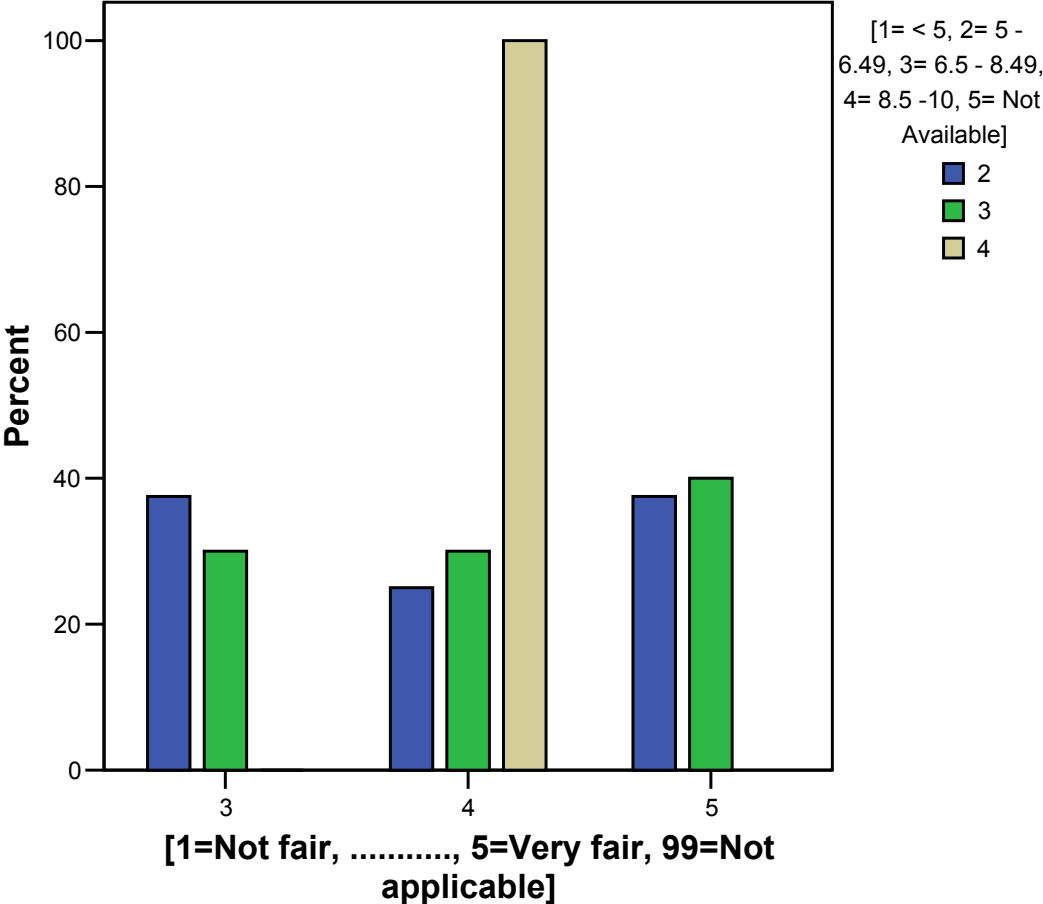
TIME INVESTED TO THE COURSE (QUESTION 7.1) BY GPA



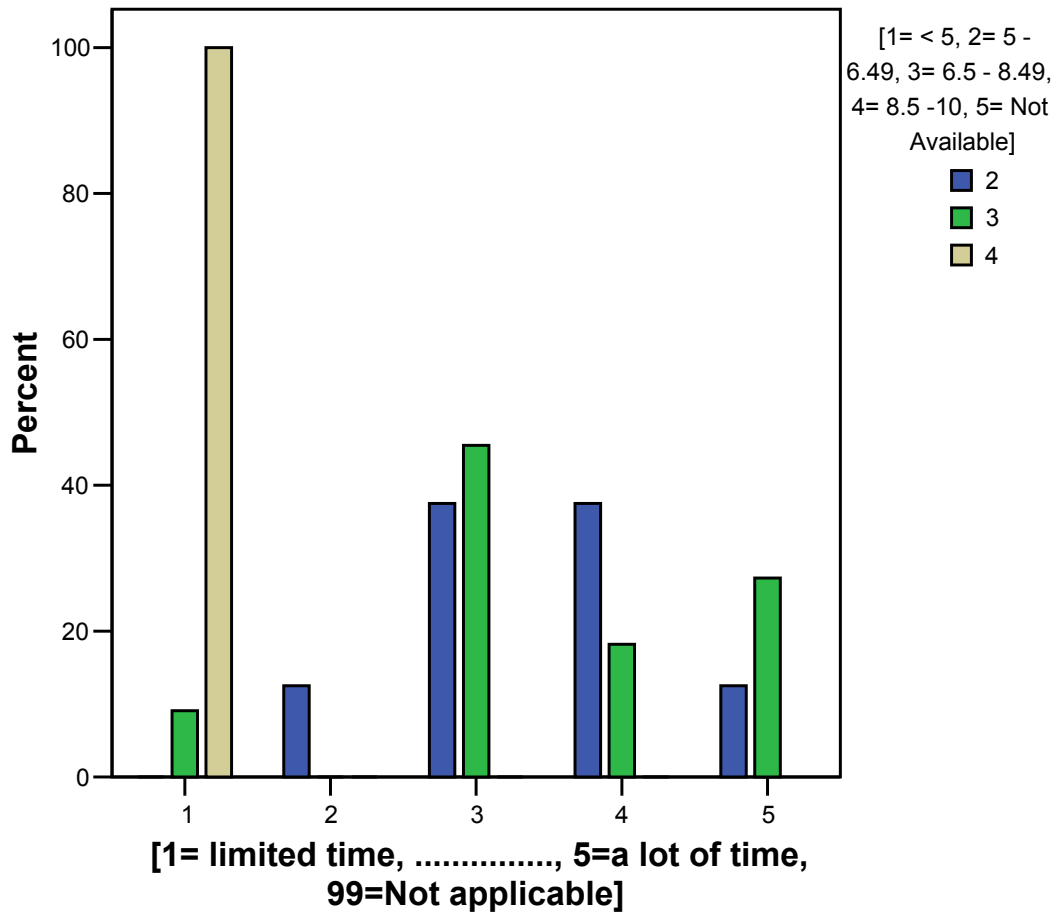
STUDY AT HOME (QUESTION 8) BY GPA



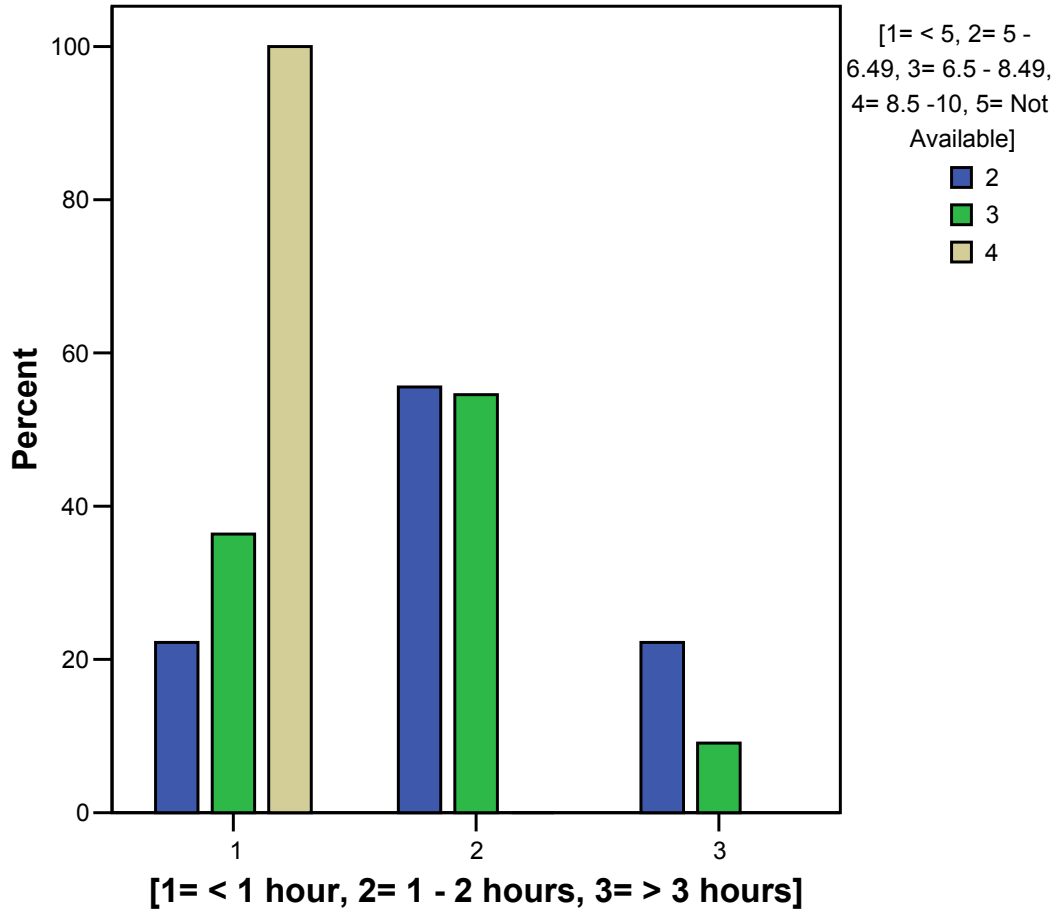
FAIRNESS OF EXAMS (QUESTION 12.3) BY GPA



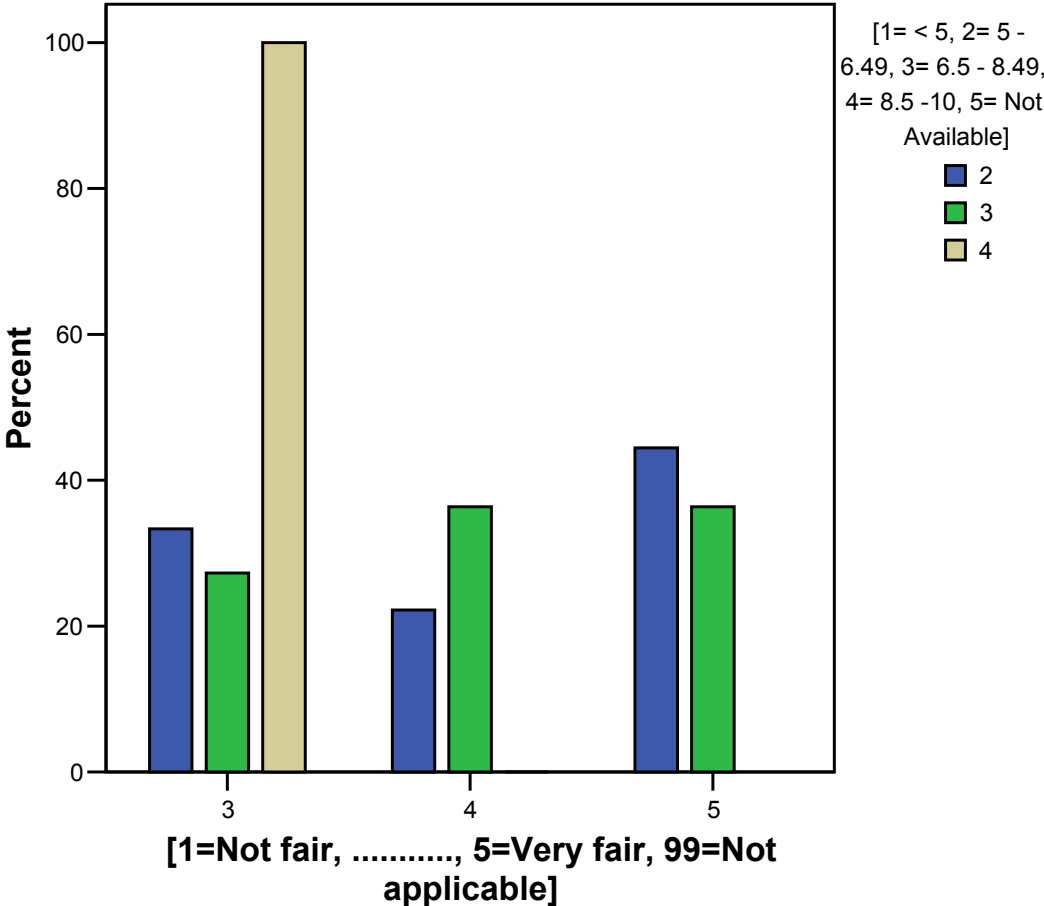
TIME INVESTED TO THE COURSE (QUESTION 6.1) BY EXPECTED GRADE



STUDY AT HOME (QUESTION 8) BY EXPECTED GRADE



FAIRNESS OF EXAMS (QUESTION 12.3) BY EXPECTED GRADE



ΠΑΡΑΡΤΗΜΑ ΣΤ

SUMMARY STATISTICS

QUESTION	Minimum	Percentile 25	Median	Percentile 75	Maximum
ΕΝΟΤΗΤΑ Α					
5	1	1	3	4	5
6.1	1	1	2	3	3
6.2	2	2	3	3	3
7.1	1	3	3	4	5
7.2	1	5	5	5	5
7.3	1	3	4	5	5
8	1	1	2	2	3
ΕΝΟΤΗΤΑ Β					
9.1	2	3	4	4	5
9.2	2	3	4	4	5
10	1	3	3	5	5
11	1	3	4	5	5
12.1	1	3	3	5	5
12.2	2	3	3	5	5
12.3	3	3	4	5	5
12.4	3	3	3	5	5
13	2	4	4	5	5
14	2	3	4	4	5
15	1	2	3	4	5
16	3	3	3	4	5
ΕΝΟΤΗΤΑ Γ					
20.1	3	4	5	5	5
20.2	3	4	4	5	5
20.3	1	4	5	5	5
20.4	3	4	4	5	5
20.5	2	4	4	5	5
20.6	2	3	4	5	5
20.7	3	3	4	5	5
20.8	2	3	4	5	5
20.9	3	3	4	5	5
21	3	3	4	5	5
22	3	3	4	4	5
25.1	2	3	4	5	5
25.2	2	2	3	4	5
25.3	2	2	4	5	5

Χαμηλές τιμές αξιολόγησης

Υψηλές τιμές αξιολόγησης

Μεγάλη διακύμανση τιμών αξιολόγησης

Minimum=Ελάχιστη τιμή, **Median**=Μεσαία τιμή, **Maximum**=Μέγιστη τιμή
Percentile 25= 25% των τιμών βρίσκονται πριν την τιμή αυτή
Percentile 75= 25% των τιμών βρίσκονται μετά την τιμή αυτή