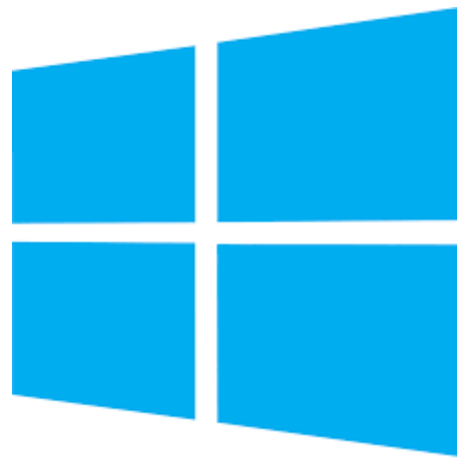


NETWORK OPERATION CENTER

FortiClient SSL VPN Installation and Setup Guide for Windows





Note:

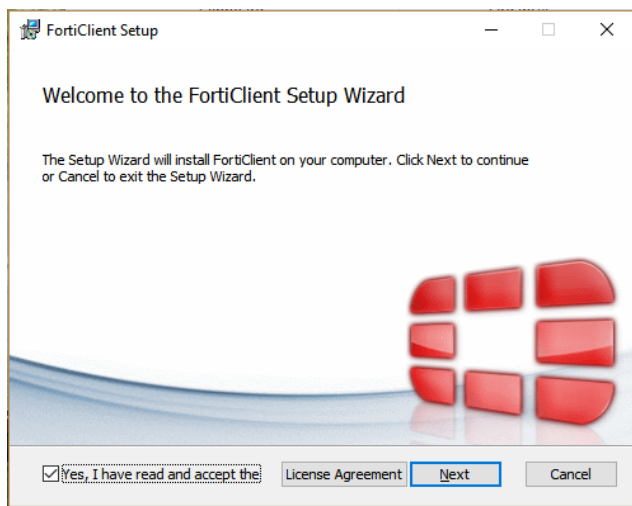
Please make sure to uninstall Checkpoint VPN Client before installing FortiClient.

1. Download FortiClient from:

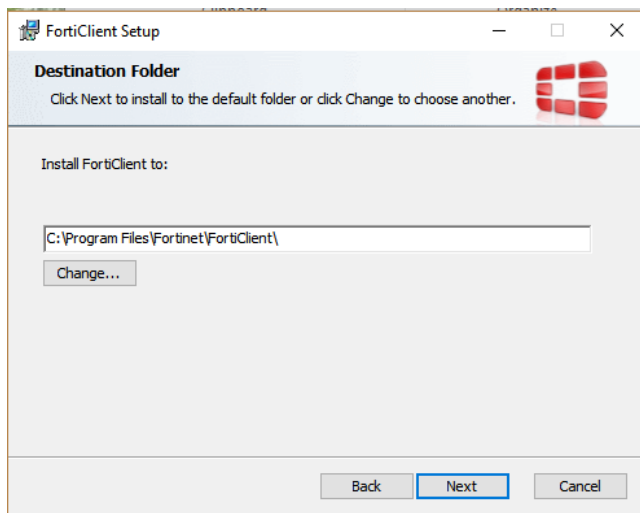
https://portal.ucy.ac.cy/EL/Administrative/OtherITServicesRequests/Documents/FortiClientSetup_PreConfig.zip

If you are not connected to portal.ucy.ac.cy, enter your UCY's username and password to login.

2. Double click on the application you have just downloaded, and in the first window select **“I have read and accept...”** and click **Next**.

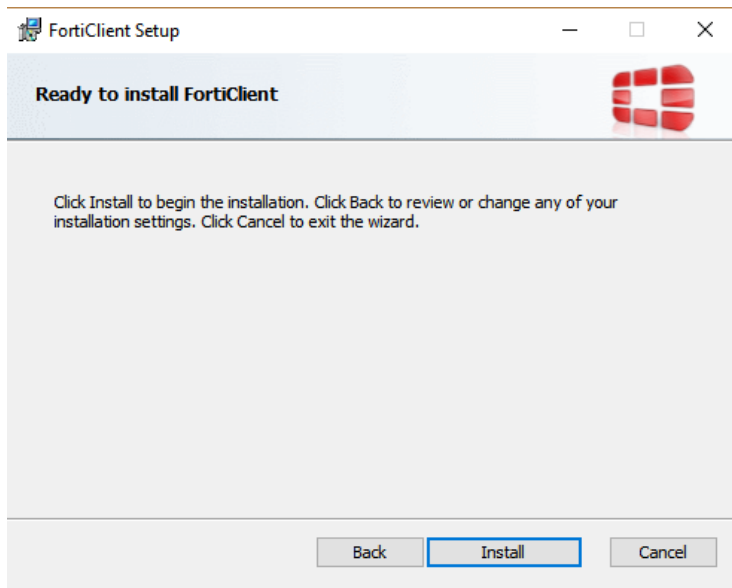


3. Click **Next**

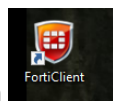
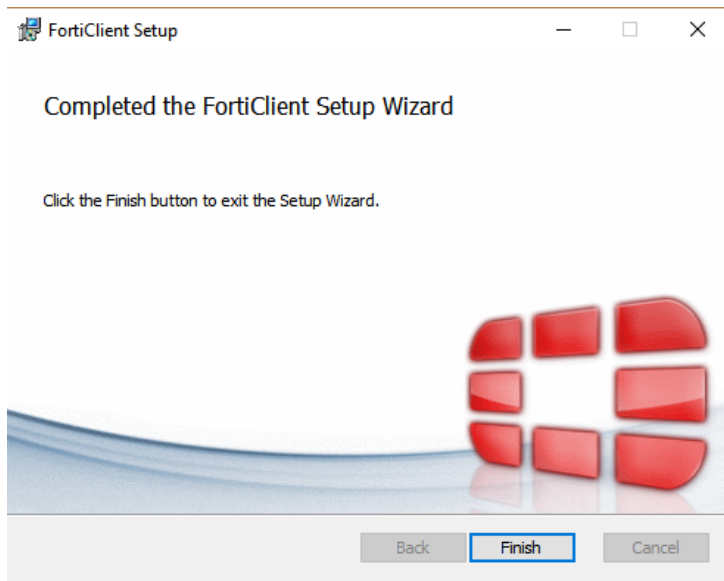




4. Click on **Install** for the installation to begin.



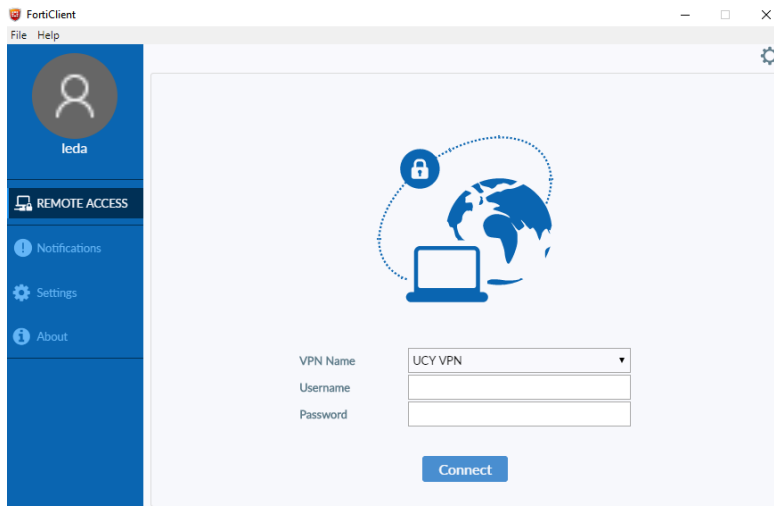
5. When the installation is completed, click **Finish**.



6. Double click on the FortiClient icon on your taskbar to launch the application.



- The application is ready-to-use with the necessary configurations for your connection to UCY's network. Insert your username and password, and click **Connect**.



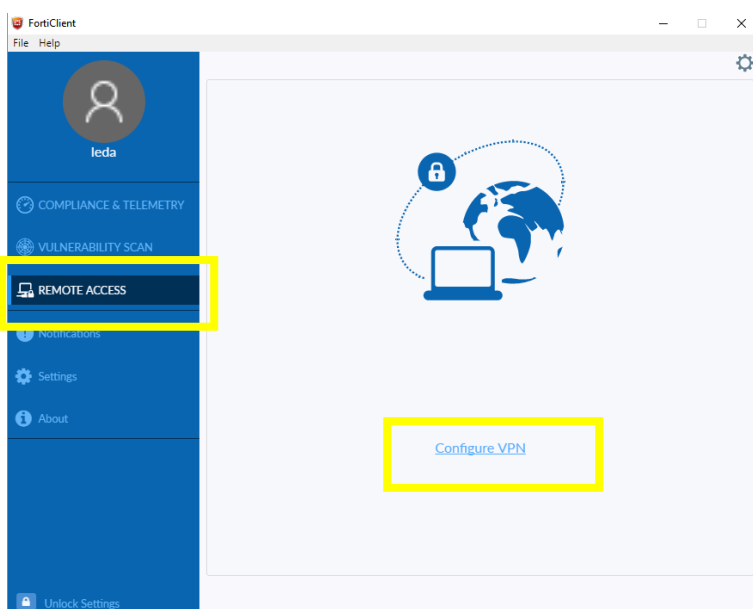
Note: You cannot connect to UCY VPN if your computer is already connected to UCY's wired or wireless network.

In case you want to use the non-preconfigured FortiClient

(https://portal.ucy.ac.cy/EL/Administrative/OtherITServicesRequests/Documents/WinFortiClientOnlineInstaller_6.0.zip) please use this configuration:

Setup Type: Secure Remote Access.

Remote Access, Configure VPN:





In the New VPN Connection window, type the following:

VPN: **SSL - VPN**

Connection name: UCY VPN

Description: UCY VPN

Remote Gateway: sslvpn.ucy.ac.cy

The screenshot shows the 'New VPN Connection' dialog box. The 'VPN' section has two tabs: 'SSL-VPN' (selected) and 'IPsec VPN'. The 'Connection Name' field contains 'UCY VPN'. The 'Description' field contains 'UCY VPN'. The 'Remote Gateway' field contains 'sslvpn.ucy.ac.cy'. Below this field is a '+Add Remote Gateway' button. There is a checkbox for 'Customize port' with the value '443' in a text box. The 'Client Certificate' dropdown menu is set to 'None'. Under the 'Authentication' section, the 'Prompt on login' radio button is selected, and the 'Save login' radio button is unselected. There is also an unchecked checkbox for 'Do not Warn Invalid Server Certificate'. At the bottom of the dialog are 'Cancel' and 'Save' buttons.

Click **Save**, and insert your username and password.